

Ages four to seven years old

AWESOME EELS

About the longfin Eel

- Longfin Eels lived before Dinosaurs... They have been around a long time!
- They can also live to be a hundred years old

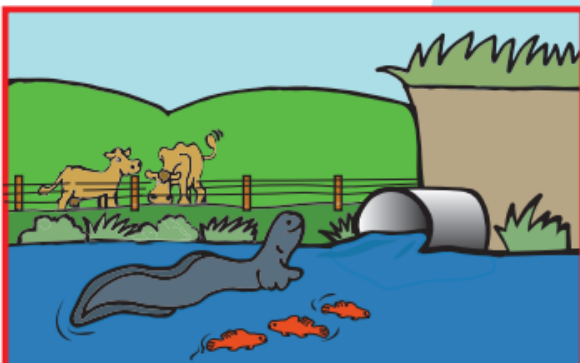
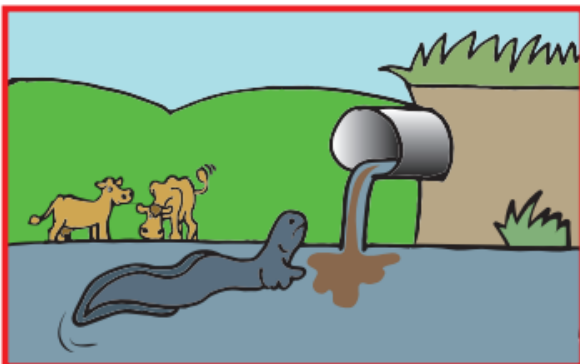


- Eels are as endangered as the little spotted Kiwi!
- The longfin eels only live in New Zealand.
- The eels are nearly endangered so we have to pick up rubbish to help the eels.



WHAT'S THE DIFFERENCE?

Spot the seven differences between these two pictures. Which is a happy eel home?



DRAW YOUR OWN EEL

Quiz

Instructions put a tick in the box for the answer you think is right!

1. Do Longfin Eels live in New Zealand? Yes=☐ No=☐
2. Can Longfin Eels live to 100 years old? Yes=☐ No=☐
3. Do you want to help the longfin Eels? Yes=☐ No=☐

COOL Facts about Tuna

Where the Longfin eels live.

- The Longfin eel live in the south island.
- They live mainly in Rivers and Lakes but can be found in almost all types of waters.
- They grow into adults in freshwater, then they go to the sea to have children.

What Longfin eels eat

- Eels eat young Bugs, Worms and Snails. When they get bigger they begin to eat Fish, Crayfish and meat.

What do they look like?

- Longfin eels feel like wet banana peels. The adult eel has a black back and often has a white tummy.

The difference between the Longfin eel and the Shortfin eel.

- The top fin of a shortfin eel only stretches out a little further forward than the bottom fin. But in a longfin the gap is bigger plus they get folds in their skin when they move.

Quiz answers



Number 3 = I really hope yes was your answer!
Number 2 = Yes
Number 1 = Yes



Please help the our longfin tuna by keeping the gutters and stormwater drains free of rubbish & dirt - Ngā mihi nui - Thank you